

E PLURIBUS ROCKUM

JERRY WILLIAMS

CATALOG NO. 011-2647-00 SCORE CATALOG NO. 011-2647-01
PRICE COMPLETE SET: \$40.00 SCORE: \$6.00

MULTI-LEVEL BAND SERIES

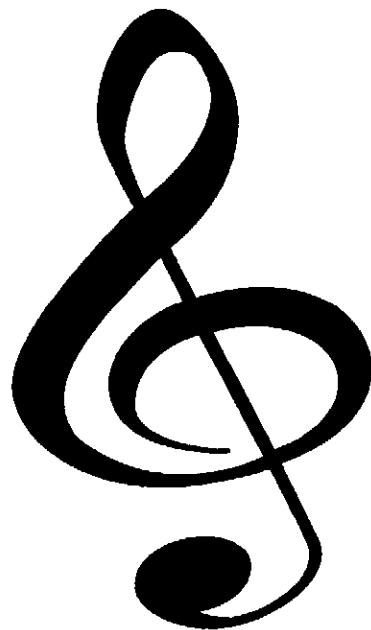
1ST PARTS WRITTEN
FOR SENIOR HIGH
SCHOOL LEVEL
PLAYERS

2ND PARTS WRITTEN
FOR JR. / MIDDLE
SCHOOL LEVEL
PLAYERS

3RD PARTS WRITTEN
FOR ELEMENTARY
SCHOOL LEVEL
PLAYERS

Barnhouse

Music Publications



C.L. BARNHOUSE COMPANY®

Music Publishers Since 1886

www.barnhouse.com

E PLURIBUS ROCKUM

Instrumentation

Full Conductor Score.....	1
Flute 1	3
Flute 2	3
Flute 3/Oboe/Bells.....	3
1st Bb Clarinet.....	3
2nd Bb Clarinet.....	3
3rd Bb Clarinet	3
Bass Clarinet/2nd Tenor Sax/Baritone TC.....	3
1st Eb Alto Saxophone	2
2nd Eb Alto Saxophone.....	2
3rd Eb Alto Saxophone	2
1st Tenor Saxophone.....	2
Eb Baritone Saxophone/Alto Clarinet.....	1
1st Bb Trumpet	3
2nd Bb Trumpet	3
3rd Bb Trumpet.....	3
1st F Horn.....	2
2nd F Horn	2
3rd F Horn	2
1st Trombone.....	2
2nd Trombone.....	2
3rd Trombone/Baritone BC.....	2
Tubas	4
Timpani.....	1
Percussion 1:.....	3
Percussion 2:.....	3

Rehearsal Suggestions

This unique piece is designed to be performed with groups of players of varied abilities such as bands where grades from 6 through 12 are in the same class or when combining several bands of different grade levels together in a "mass band" to end a concert. The composer has tried to keep the 1st parts more difficult than the 2nd parts and the 2nd parts more difficult than the 3rd parts to help each student have an important part that they are capable of playing. In some cases, such as the tuba part, this concept was not feasible so only one part was written for all. It is not necessary to have all instrument parts covered to play this arrangement.

Many percussion parts were included to allow a large number of students to be involved in the performance of this number. Again, it is not necessary to have each percussion part covered to have a nice performance of the piece. In fact, the sound of this arrangement can be greatly enhanced by having a drum set player play in a "rock" style and thereby replacing the Percussion 1 part. When performing the number with a drum set, you should have as many students playing the instruments found on the Percussion 2 part as is possible.

The Composer

Jerry Williams holds a Bachelor of Music Education degree from Indiana University and a Master of Arts degree in Education from Ball State University. For the past eighteen years he has taught instrumental music in the Greensburg School Corporation, Greensburg, Indiana. In addition, he has been involved in free-lance writing and has the music to several commercials produced in the Indianapolis area to his credit.

Jerry has written and arranged music for all levels of school bands. His writing approach for young bands has always been to assure the director of a full-sounding arrangement that contains reasonable performance challenges. Jerry has several young band compositions in the Barnhouse catalog which are becoming widely known for their playability by young musicians.

E PLURIBUS ROCKUM

Jerry Williams

Allegro (♩ = 132)

Flute 1
Flute 2
Flute 3
Oboe, Bells

B♭ Clarinet 1
B♭ Clarinet 2
B♭ Clarinet 3
B♭ Bass Clarinet
B♭ Tenor Sax 2

E♭ Alto Sax 1
E♭ Alto Sax 2
E♭ Alto Sax 3
B♭ Tenor Sax 1
E♭ Baritone Sax

Allegro (♩ = 132)

B♭ Trumpet 1
B♭ Trumpet 2
B♭ Trumpet 3

F Horn 1
F Horn 2
F Horn 3

Trombone 1
Trombone 2
Baritone Trombone 3
Tuba

Percussion 1
F. C.
Claves
Percussion II
Tamb.

13

Fl. 1

Fl. 2

Fl. 3

Obon, Bells

B♭ Clar. 1

B♭ Clar. 2

B♭ Clar. 3

B. Clar.
T. Sax. 2

E♭ A. Sax. 1

E♭ A. Sax. 2

E♭ A. Sax. 3

T. Sax. 1

E♭ B. Sax.

13

B♭ Tpt. 1

B♭ Tpt. 2

B♭ Tpt. 3

F Horn. 1

F Horn. 2

F Horn. 3

Tbn. 1

Tbn. 2

Baritone
Tbn. 3

Tuba

Perc. I

Timp

Perc. II

Shaker

Choke (Rim)

Fl. 1
Fl. 2
Fl. 3
Oboe, Belle
Bb Clar. 1
Bb Clar. 2
Bb Clar. 3
B. Clar.
T. Sax. 2
Eb A. Sax. 1
Eb A. Sax. 2
Eb A. Sax. 3
T. Sax. 1
Eb B. Sax.
Bb Tpt. 1
Bb Tpt. 2
Bb Tpt. 3
F Horn. 1
F Horn. 2
F Horn. 3
Tbn. 1
Tbn. 2
Baritone
Tbn. 3
Tuba
Perc. I
Timp
Perc. II

(Head) (Rim) Rim

Detailed description: This is a page of a musical score for a large ensemble. It contains 22 staves, each representing a different instrument or section. The instruments listed on the left are: Flute 1, Flute 2, Flute 3, Oboe/Bassoon, Clarinet in Bb 1, Clarinet in Bb 2, Clarinet in Bb 3, Clarinet in Bb, Tenor Saxophone 2, Alto Saxophone in Eb 1, Alto Saxophone in Eb 2, Alto Saxophone in Eb 3, Tenor Saxophone 1, Baritone Saxophone in Eb, Trumpet in Bb 1, Trumpet in Bb 2, Trumpet in Bb 3, Horn in F 1, Horn in F 2, Horn in F 3, Trombone 1, Trombone 2, Baritone Trombone 3, Tuba, Percussion I, Timpani, and Percussion II. The score is written in a common time signature (C) and a key signature of one flat (Bb). The percussion parts include specific markings for 'Head' and 'Rim' techniques. The overall layout is clean and professional, typical of a published musical score.

25 (2nd time only)

Fl. 1

Fl. 2 (2nd time only)

Fl. 3 (2nd time only)
Oboe, Bells

B♭ Clar. 1 (2nd time only)

B♭ Clar. 2

B♭ Clar. 3

B. Clar.
T. Sax. 2

E♭ A. Sax. 1 (2nd time only)

E♭ A. Sax. 2

E♭ A. Sax. 3

T. Sax. 1

E♭ B. Sax.

25 (2nd time only)

B♭ Tpt. 1

B♭ Tpt. 2

B♭ Tpt. 3

F Horn. 1

F Horn. 2

F Horn. 3

Tbn. 1

Tbn. 2

Baritone
Tbn. 3

Tuba

Perc. I

Timp (2nd time only)

Perc. II

II. 1. 2.

FL. 1 *Play* *cresc.*

FL. 2 *Play* *cresc.*

FL. 3 *Play* *cresc.*

Oboe, Bells

B♭ Clar. 1 *Play* *cresc.*

B♭ Clar. 2 *cresc.*

B♭ Clar. 3 *cresc.*

B. Clar. T. Sax. 2

E♭ A. Sax. 1 *cresc.*

E♭ A. Sax. 2 *cresc.*

E♭ A. Sax. 3 *cresc.*

T. Sax. 1 *cresc.*

E♭ B. Sax. *cresc.*

II. 1. 2.

B♭ Tpt. 1 *cresc.*

B♭ Tpt. 2 *cresc.*

B♭ Tpt. 3 *cresc.*

F Horn. 1 *cresc.*

F Horn. 2 *cresc.*

F Horn. 3

Tbn. 1 *cresc.*

Tbn. 2 *cresc.*

Baritone Tbn. 3

Tuba

Perc. I *Play* *cresc.*

Timp *f*

Perc. II

35

Fl. 1

Fl. 2

Fl. 3
Obon, Bells

B♭ Clar. 1

B♭ Clar. 2

B♭ Clar. 3

B. Clar.
T. Sax. 2

E♭ A. Sax. 1

E♭ A. Sax. 2

E♭ A. Sax. 3

T. Sax. 1

E♭ B. Sax.

35

B♭ Tpt. 1

B♭ Tpt. 2

B♭ Tpt. 3

F Horn. 1

F Horn. 2

F Horn. 3

Tbn. 1

Tbn. 2

Baritone
Tbn. 3

Tuba

Perc. I
Ride Cym.
S.D.
B.D.

Timp

Perc. II
Tamb.
Cow Bell

Fl. 1
Fl. 2
Fl. 3
Oboe, Bells
B \flat Clar. 1
B \flat Clar. 2
B \flat Clar. 3
B. Clar.
T. Sax. 3
E \flat A. Sax. 1
E \flat A. Sax. 2
E \flat A. Sax. 3
T. Sax. 1
E \flat B. Sax.
B \flat Tpt. 1
B \flat Tpt. 2
B \flat Tpt. 3
F Horn. 1
F Horn. 2
F Horn. 3
Tbn. 1
Tbn. 2
Baritone
Tbn. 3
Tuba
Perc. I
Timp
Perc. II

This page of a musical score contains 22 staves, each representing a different instrument or section of an ensemble. The staves are arranged vertically from top to bottom. The instruments listed on the left are: Fl. 1, Fl. 2, Fl. 3, Oboe, Bells, B \flat Clar. 1, B \flat Clar. 2, B \flat Clar. 3, B. Clar., T. Sax. 3, E \flat A. Sax. 1, E \flat A. Sax. 2, E \flat A. Sax. 3, T. Sax. 1, E \flat B. Sax., B \flat Tpt. 1, B \flat Tpt. 2, B \flat Tpt. 3, F Horn. 1, F Horn. 2, F Horn. 3, Tbn. 1, Tbn. 2, Baritone, Tbn. 3, Tuba, Perc. I, Timp, and Perc. II. Each staff contains musical notation, including notes, rests, and other symbols, indicating the specific part for that instrument.

(To Coda) **D.S. al Coda**

Fl. 1
Fl. 2
Fl. 3
Oboe, E♭
B♭ Clar. 1
B♭ Clar. 2
B♭ Clar. 3
B. Clar.
T. Sax. 2
E♭ A. Sax. 1
E♭ A. Sax. 2
E♭ A. Sax. 3
T. Sax. 1
E♭ B. Sax.

cresc.

(To Coda) **D.S. al Coda**

B♭ Tpt. 1
B♭ Tpt. 2
B♭ Tpt. 3
F Horn. 1
F Horn. 2
F Horn. 3
Tbn. 1
Tbn. 2
Baritone
Tbn. 3
Tuba

cresc.

Perc. I
Timp
Perc. II

cresc.

⊕ Coda

54

Fl. 1

Fl. 2

Fl. 3
Oboe, Belle

B♭ Clar. 1

B♭ Clar. 2

B♭ Clar. 3

B. Clar.
T. Sax. 2

E♭ A. Sax. 1

E♭ A. Sax. 2

E♭ A. Sax. 3

T. Sax. 1

E♭ B. Sax.

⊕ Coda

54

B♭ Tpt. 1

B♭ Tpt. 2

B♭ Tpt. 3

F Horn. 1

F Horn. 2

F Horn. 3

Tbn. 1

Tbn. 2

Baritone
Tbn. 3

Tuba

Perc. I
Cym.
S.D.
B.D.

Timp

Tamb.

Perc. II
Cow Bell

(choke)

Claves

Fl. 1

Fl. 2

Fl. 3
Oboe, Bells

B♭ Clar. 1

B♭ Clar. 2

B♭ Clar. 3

B. Clar.
T. Sax. 2

E♭ A. Sax. 1

E♭ A. Sax. 2

E♭ A. Sax. 3

T. Sax. 1

E♭ B. Sax.

B♭ Tpt. 1

B♭ Tpt. 2

B♭ Tpt. 3

F Horn. 1

F Horn. 2

F Horn. 3

Tbn. 1

Tbn. 2

Baritone
Tbn. 3

Tuba

Perc. I
S.D.
B.D.

Timp

Perc. II
Tamb.

A musical score for a large ensemble, including woodwinds, brass, and percussion. The score is arranged in multiple systems, each with a staff for a different instrument. The instruments listed on the left are: Fl. 1, Fl. 2, Fl. 3 Oboe, Bells, Bb Clar. 1, Bb Clar. 2, Bb Clar. 3, B. Clar. T. Sax. 2, Eb A. Sax. 1, Eb A. Sax. 2, Eb A. Sax. 3, T. Sax. 1, Eb B. Sax., Bb Tpt. 1, Bb Tpt. 2, Bb Tpt. 3, F Horn. 1, F Horn. 2, F Horn. 3, Tbn. 1, Tbn. 2, Baritone Tbn. 3, Tuba, Perc. I, Timp, and Perc. II. The score features various musical notations, including notes, rests, and dynamic markings such as 'cresc.' and 'f'. A boxed number '68' appears above the staff for Fl. 1 and Bb Tpt. 1. A boxed number '69' appears above the staff for Bb Tpt. 1. The percussion parts (Perc. I, Timp, Perc. II) are located at the bottom of the page.

FL. 1

FL. 2

FL. 3
Oboe, Bells

B♭ Clar. 1

B♭ Clar. 2

B♭ Clar. 3

B. Clar.
T. Sax. 2

E♭ A. Sax. 1

E♭ A. Sax. 2

E♭ A. Sax. 3

T. Sax. 1

E♭ B. Sax.

B♭ Tpt. 1

B♭ Tpt. 2

B♭ Tpt. 3

F Horn. 1

F Horn. 2

F Horn. 3

Tbn. 1

Tbn. 2

Baritone
Tbn. 3

Tuba

Perc. I
Cym.
S.D.
B.D.

Timp

Perc. II
Claves
Tamb.
Cow Bell